

VOSS

Quick connect system 232

The system solution
for air brake lines

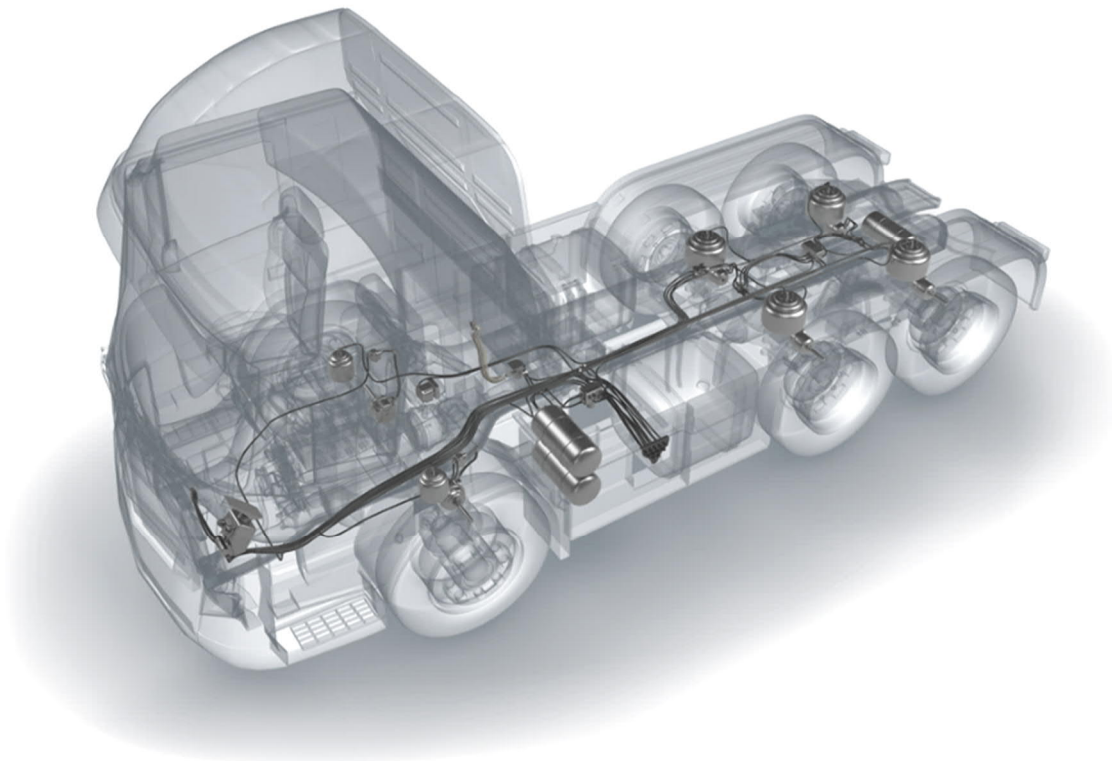


Worldwide, the VOSS quick connect system 232 for pneumatic systems in commercial vehicles guarantees maximum safety and the best solutions, even for the most difficult connections.

VOSS quick connect system 232 offers commercial vehicle manufacturers an extended range of system solutions with enhanced connectors. New solutions will enable a direct connection of the tube and flexible cartridge for parallel use of both variants in manifolds, multi-connectors and endplates.

With the new endplates, brake components can be pre-assembled uniformly based on the manufacturer's unique production strategy.

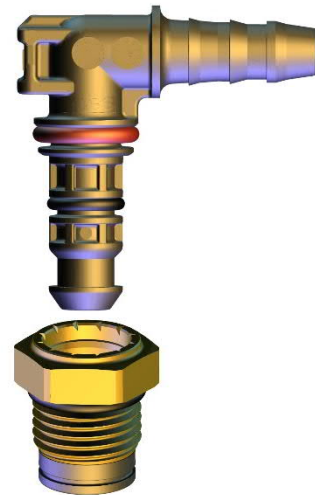
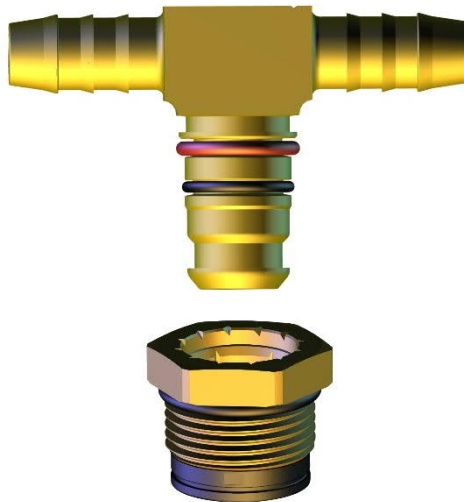
Manufacturers will always find the right solution with VOSS quick connect system 232. In addition, VOSS offers line pre-assembly as a new service at several locations.



Safety, economy and flexibility for
pneumatic systems in commercial
vehicles

The classic quick connect system 232

... a reliable, secure solution that offers a variety of options to meet your needs.



Quick connect system 232

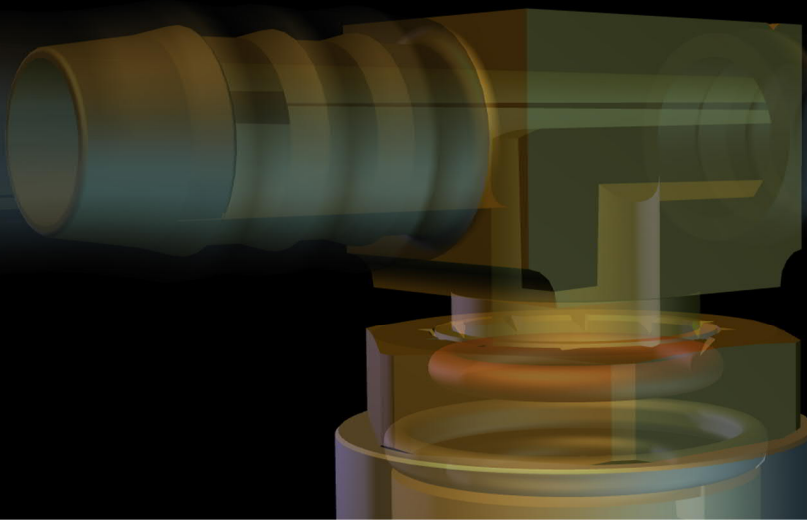
- Brass and plastic plugs
- Brass coupling units
- Two snap-in stages
- Low, uniform insertion forces
- Indication of an incomplete push-in process
- High-temperature variants
- Test ports and valves
- Multiple connectors, manifolds and bulkhead plates

Alternative ports for brake components

- Coupling units and bores are available based on industry standards: DIN 3852-1 X and ISO 4039-1

Plastic plugs in nominal size 9

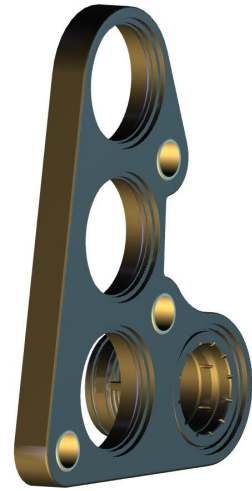
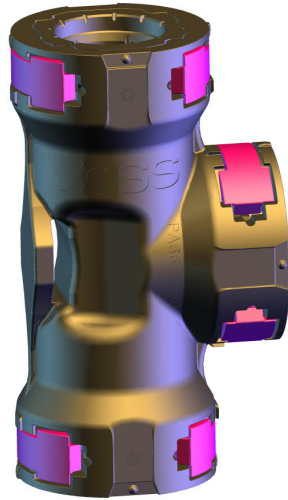
- Nominal size 9 small series plastic plugs are now available. The use of brass plugs in nominal size 9 will also be possible.



Coupling unit „Condensed“

*... for special applications
in final assembly*

*... for quick assembly
of multiple connections*



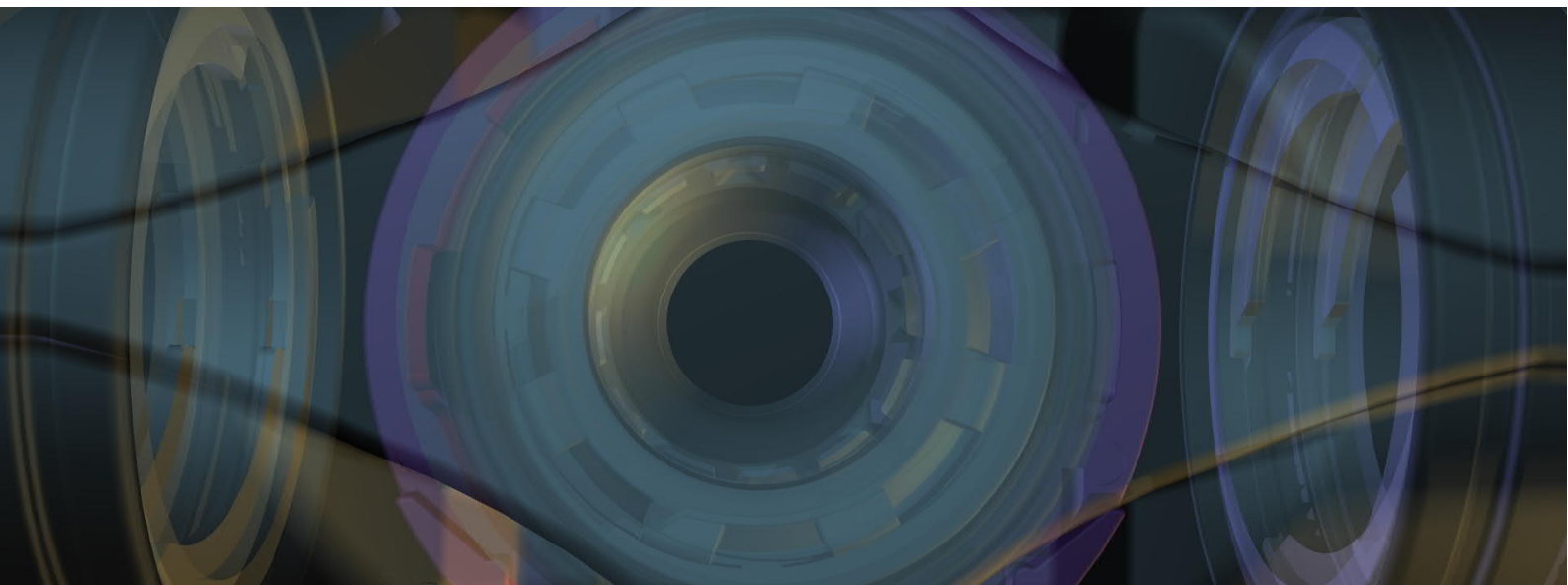
Coupling unit „Condensed“

in formed parts

in endplates

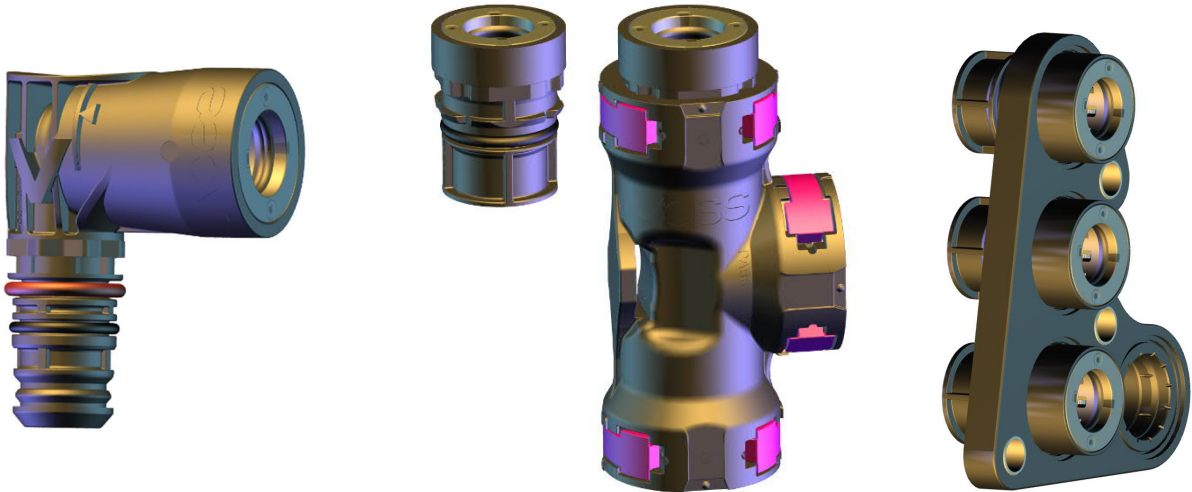
- Plastic coupling unit
- For use as a cartridge in formed parts and endplates
- Nominal sizes 9 and 12
- Disassembly using tools
- Protection against disassembly under pressure

- Can be combined with 232^{plus} cartridges
- Different formed parts and endplates are available
- Customized solutions



Quick connect system 232^{plus}

*... an extension of the
quick connect system 232*



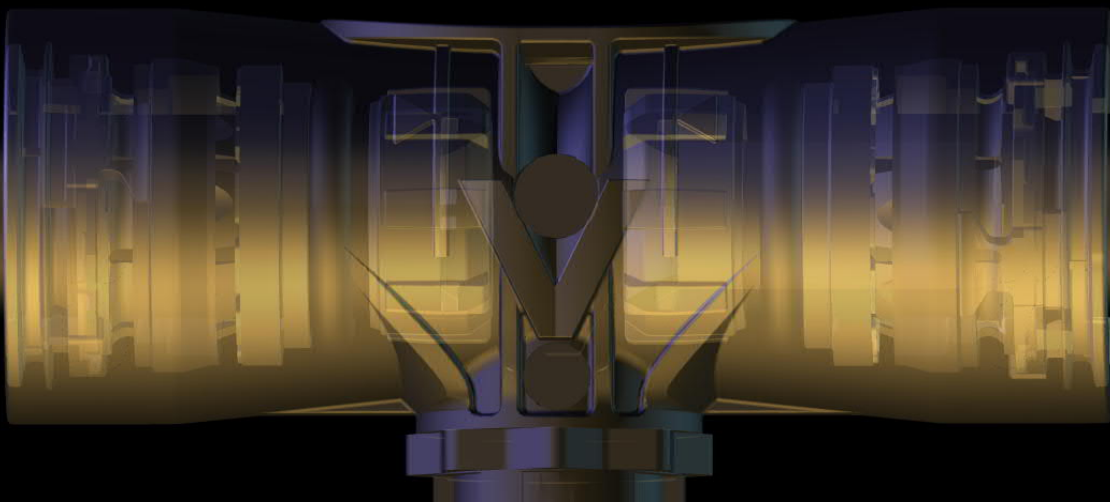
Quick connect system 232^{plus}

- Push-to-connect system
- Nominal sizes 9 and 12
- For metric and inch tubes
- Variants for disassembly with and without tools
- Indication of an incomplete push-in process

232^{plus} cartridges in formed part

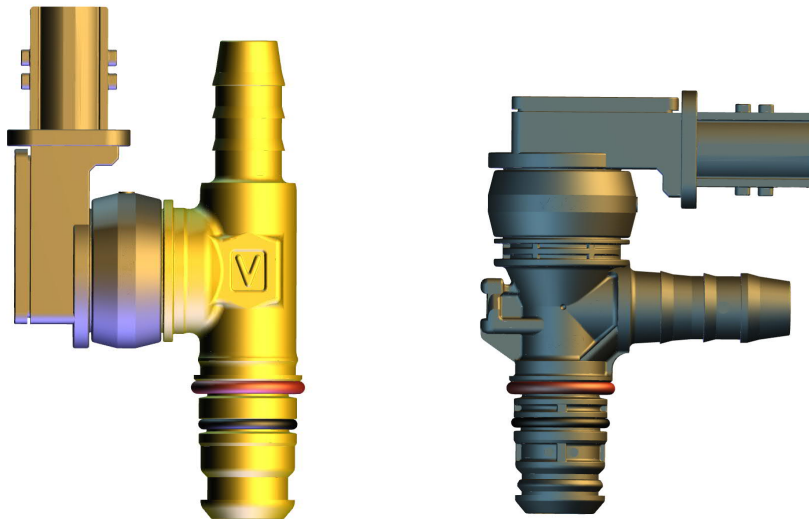
- Can be combined with "Condensed" cartridges
- Different formed parts and endplates are available
- Customized solutions
- Interchangeability with quick connect system 232 without changing the tube length in the documentation

232^{plus} cartridges in endplates



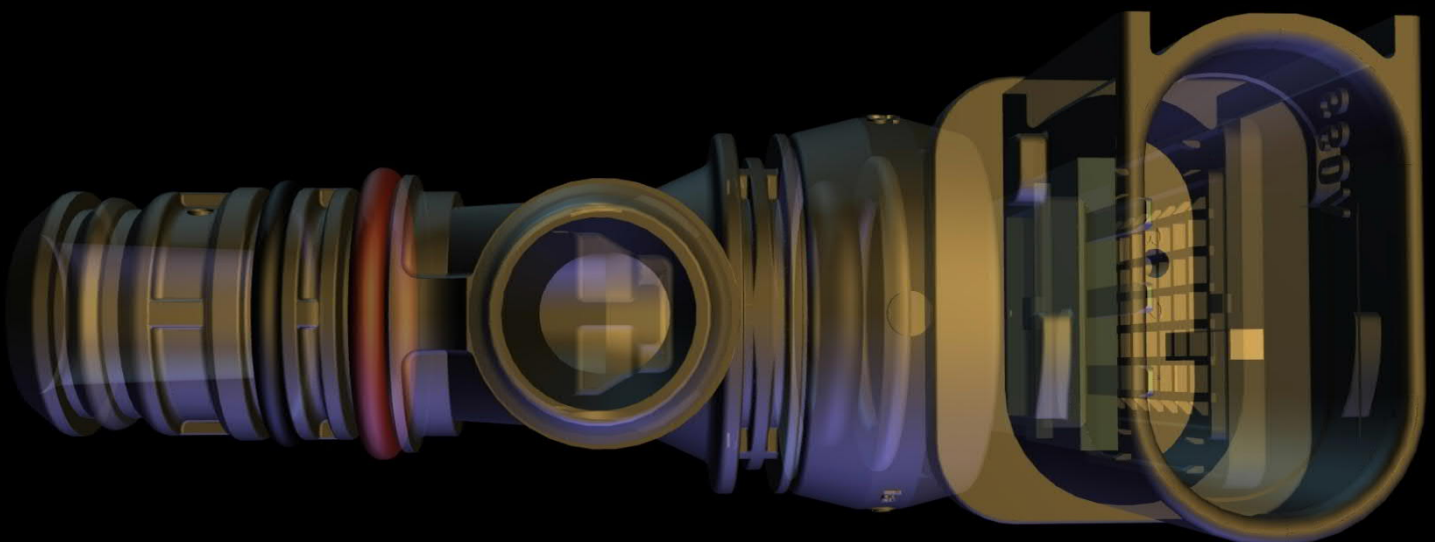
Additional feature for quick connect system 232: Sensors

... easily integrate pressure sensors into the system.



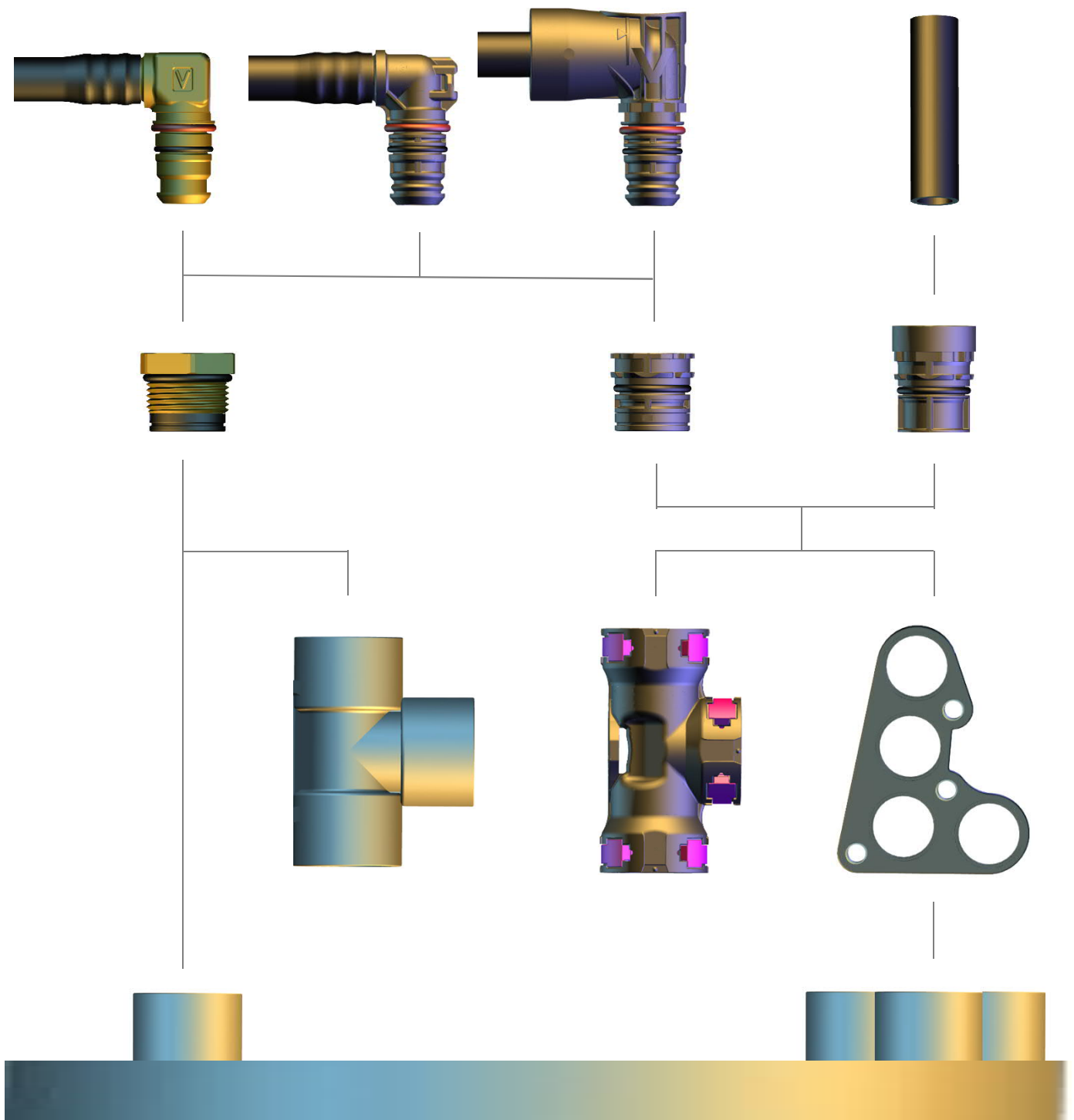
Integrated sensors

- Pressure sensors for various applications in the pneumatic system
- Integration in brass or plastic plugs of quick connect systems 232 and 232^{plus}
- Only one connection point (e.g. at the air-suspension bellow) required for compressed air and sensor connection
- Rotatable sensor
- Simple assembly
- Small installation space
- Fewer components
- Reduced weight



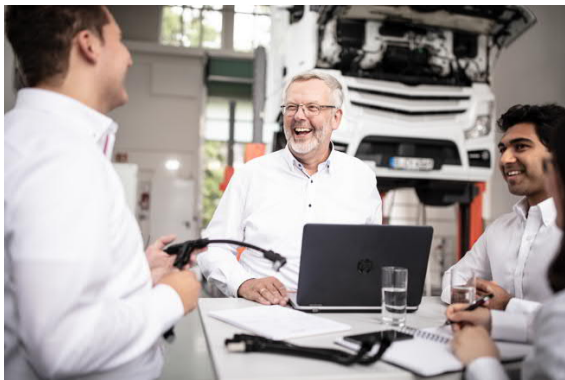
232 – The system

... solve every type of line routing with one complete system solution.



232 – The service

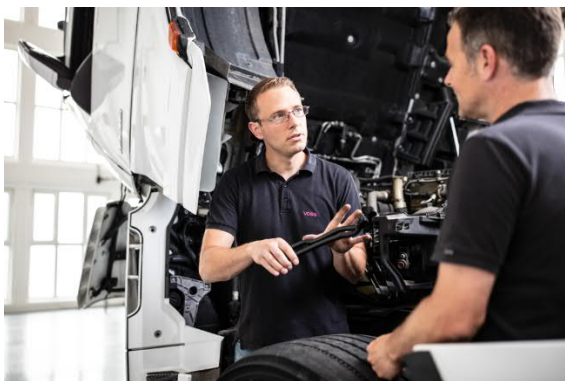
*... rely on your service partner
at any location.*



Proximity to customers

Direct customer service and support is very important to VOSS. This is why we are located wherever our customers are in order to provide fast, reliable, quality service worldwide.

VOSS manufactures its products based on strict quality standards and processes to ensure customers receive the same quality and consistency at all locations worldwide.



Vehicle optimization

Vehicle optimization at VOSS locations worldwide offers customers the opportunity to question previous solutions and find new ones. The vehicles are examined with regard to response times of the brake system, line routing, number of different components, installation space, weight and the possible integration of components.

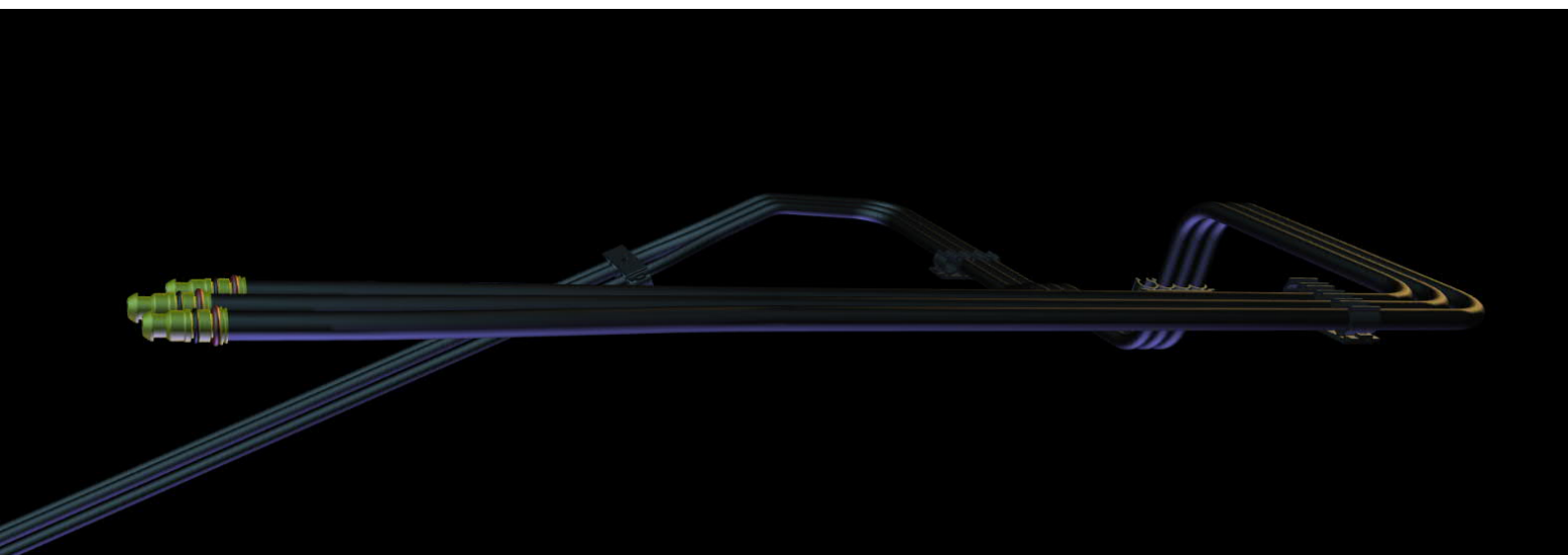
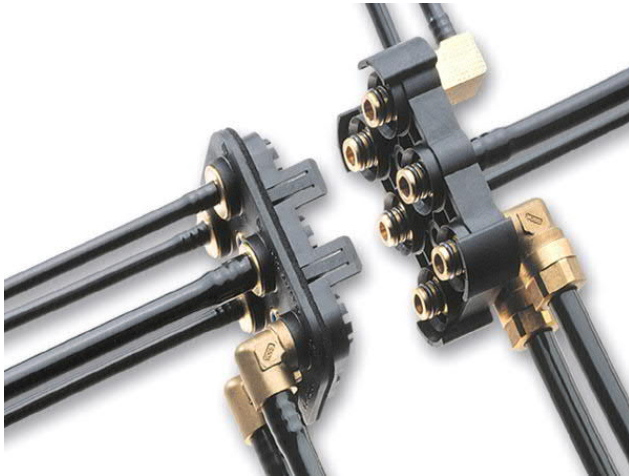


Pre-assembly of line bundles

VOSS develops customer-specific solutions based on decades of experience with pneumatic system products and processes. We offer customers the option of line pre-assembly, bending of the lines, plug assembly, mounting of additional components and line bundling.

Manifolds, multi-connectors and brake lines

... one source for everything.





Contact

VOSS Automotive, Inc.

4640 Hillegas Road

Fort Wayne, IN 46818

Phone: +1 260 373-2277

Fax: +1 260 373-2299

info@us.voss.net

www.vossusa.com

VOSS Automotive GmbH

P. O. Box 15 40

51679 Wipperfürth

Leiersmühle 2-6

51688 Wipperfürth

Germany

Phone: +49 2267 63-0

Fax: +49 2267 63-5982

automotive@voss.net

www.voss-automotive.net